

RBC

RE-BUILD CONSTRUCTION PVT LTD

51st
ANNIVERSARY
YEARS
1970-2021
FAMILY OWNED BUSINESS



IN COLLABORATION WITH

 **AEGION**
Stronger. Safer. Infrastructure.®

 **FYFE**
AMF MARINE

 **IIPED**

 **PERLITA**
Y VERMICULITA

WHO WE ARE

The founders of RBC, started working in the construction industry back in 1970s. After nearly 50 years of hard work and struggle in the field, they decided to bring together a team of highly qualified and experienced professionals to form a construction firm by the name, Rebuild Construction (RBC). RBC is a family business and is one of the few construction businesses which operate in a very systematic and organized fashion. RBC is a PEC registered firm and uses the latest technology to provide services to its clients, which competently meet the international standards. The company is known for going by the rule of “safety first”. The well-being of their employees is their utmost priority and every worker is provided with excellent career growth opportunities.



OUR MISSION

To provide our clients with innovative construction solutions, using our knowledge and experience in design, planning, execution and implementation of building components.

**FROM
CONCEPT TO
CREATION**





CHAIRMAN

MASHKOOR AHMED

Mashkoor Ahmed landed in Pakistan after the historic partition of 1947. Mashkoor was very young at the time and focused on having the kitchen running, with intentions to run a well-established business. 1970 was the first occasion when Mashkoor Ahmed found an opportunity to explore the construction industry. The opportunity was more of a challenge and the young man, intrigued by the job volunteered to take the responsibility.

House of Habib was Mashkoor's next venture. Many well-known designers and contractors of that time refused to take the job, but Mashkoor was ever ready. He took the job and surprised the client by manufacturing a master piece. He figured a cost-effective yet quality oriented solution to finish the job. The list of the projects which came next is a never-ending one.

CEO

DANISH AHMED SIDDIQUI

We are determined to transform the vision we have for this world into a reality. We have no limitations and we work up to our true potential, in pursuit of our goals. A person who has high ambitions, does everything he can in his power to achieve his desired results and then leaves all the rest for Allah to decide. We believe in providing quality work to our clients, which is only achieved by our two, secret powers, hard work and positive attitude.

"Leadership is the capacity to translate vision into reality"



COLLABORATION WITH AEGION

Since 1971, Aegion Corporation is global leader & playing pioneering role in finding transformational solutions to rehabilitate aging structures & infrastructure. We are global leaders in externally bonded fiber reinforced polymer (FRP) systems for the strengthening, repair & restoration of masonry, concrete, steel & wooden structures.

FYFE Company designs & manufactures fiber-reinforced polymer (FRP) systems for strengthening, repair & restoration of structures. Founded in 1988 to strengthen deficient bridge columns in California using aerospace materials, FYFE is recognized around the world as the pioneer of the FRP structural strengthening industry with over 40 patents in the field. In 2011, FYFE was acquired by Aegion Corporation & today continues to serve various markets.

Aegion is the parent company of Insituform, Corrpro, Aegion Coating Services, AllSafe Brinderson, Fibrwrap Fyfe Co., MTC, P2S ServTech, Schultz, Underground Solutions and United Pipeline Systems



TYFO® FIBRWRAP® FRP SYSTEM

Fyfe Co LLC specializes in the Tyfo® Fibrwrap® Advanced Composite Systems for the retrofitting, strengthening, protection and repair of structures. Composite systems are comprised of carbon, glass and aramid fiber reinforced polymer (FRP) materials.

Fyfe also offers innovative construction products and structural systems. These includes disc bearings, expansion joints, concrete repair products, blast mitigation and ballistic products.

Since 1988, The Tyfo® Fibrwrap® Systems have been tested and proven for effectiveness and durability. Over 500 structural and material tests, both destructive and non-destructive, have been performed on the Tyfo® Fibrwrap® Systems. These include full-scale structural testing for a variety of design goals, long-term environmental durability testing, and in-situ testing of actual installations. The result is reliable composite strengthening systems that have demonstrated intended design performances.



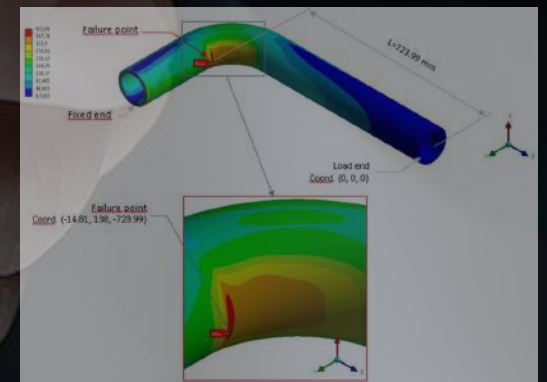
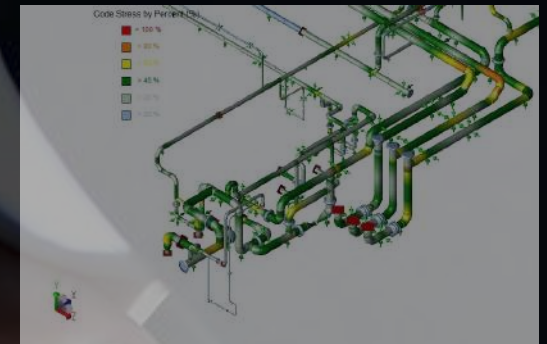
JOINT VENTURE WITH IIPED



RBC join hands with IIPED a reputable engineering services and technical solutions provider based in UAE with international operation wings. We offer cutting edge engineering design & analysis solutions in mechanical projects.

Piping Engineering refers to the detailed study of the feasibility of the piping system and execution of it to meet specific requirement. It calls the expertise from several fields like Chemical, Mechanical, Electrical etc. for the design and installation.

We being the part of internationally respected engineering consultant offers comprehensive, technically excellent and innovative solutions. we uphold customer satisfaction as the success key and always try to sustain it throughout.





Pipe stress analysis is a method to determine how a piping system behaves under various loads based on its material, pressure, temperature, fluid, and support.

Piping system behaves differently under varying dynamic loading which needs to be analyzed so we provide dynamic stress analysis report of piping systems.

We follow best engineering practices for successful projects providing multiple analysis reports

IIPED has expertise in the piping design field where our service delivers complete design of process, piping layout, stress analysis, dynamic stress analysis, MEP support system analysis, Seismic and Wind analysis along with detail design reports and drawings.

We offer our services to MEP Consultants for projects in Oil and Gas Sectors, Power Plants, Industrial Projects, Pharma Processing Sectors, Energy Sectors etc.

RBC IS INVOLVED IN MARINE ENGINEERING



AMF Marine is a well-established marine solution provider in UAE, started its operations from Dubai catering ports and marine contractors with custom made solutions as per their projects requirements. With our wide range of manufacturers network and partners globally combined with well-versed design and project management team.

Our mission is to provide our client with the best value for money solutions, as per their project requirements by focusing on all project aspects.

Through constant innovation and continuous enhancements, AMF is developing into a Complete Marine Solutions Provider (CSP), a tag that is well recognized within the marine fraternity.

AMF's range of marine solutions covers Ports & Harbors, Oil & Gas operations, Offshore Operators, Vessel Owners, Shipyards, Ship chandlers, Marine Traders, Marine Contractors & Consultants and many more.

With each project, we have enhanced ourselves to provide a better solution.

PERLITA Y VERMICULITA



Perlita y Vermiculita is a company that specializes in the manufacture and distribution of products for passive fire protection such as fireproofing mortars, intumescent paints and fire compartments.

At Perlita y Vermiculita S.L.U. we have been developing systems for passive fire protection of buildings for 30 years, ensuring the safety of people and property for our customers. Our products are used on all five continents. This allows us to have a large production capacity, as well as excellent customer management, which helps us to advise them in the best possible way.

At Perlita y Vermiculita we have implemented the quality and environment system in accordance with ISO 9001 and 14001 Standards. Our materials are manufactured in accordance with the quality procedures of these standards at all times.

Passive Fire protection minimizes risk of fire spread and allows safe exit of occupants and entrance of fire brigade while keeping the structural integrity of property and likelihood of collapse.



SERVICES

Rebuild Construction (RBC) provides comprehensive and integrated services at all stages of construction projects which maybe renovation, retrofitting, NDT Tests, Structural Analysis for existing buildings and engineering design projects. Our services includes preliminary studies and investigation of existing structures, detailed as-built drawings to facilitate clients/consultants.

RBC has will and skill to perform challenging structural restoration, strengthening, jacketing projects via conventional methods as well as advance strengthening material i.e. FRP Composite System. We offer detailed formulation including concepts, design, execution methodology and application.

COMMERCIAL & INDUSTRIAL PREVIOUS PROJECTS

- Aga Khan Hospital
 - New Star Dying
 - FWO M9 Bridges
 - PAK Suzuki
 - KIA Lucky Motor
 - Bahria Town Karachi
M9 Brige Extension
 - Rajby Industries
 - Artistic Fabric and Garments
 - Artistic Milliners
 - Soorty Textile
 - Indus Hospital
 - Bahria Icon Tower
 - DHA City
 - Fateh Ali Chemicals
 - Mekotex (pvt.) Ltd.
 - Print Textile
 - Union Fabric
 - HSM Packages
 - UT International
 - Ideal Textile
 - Sheikhani Industries
 - Karwon Textile
 - Sea Mill Fisheries
 - Fine Tex
 - DHA Head Office
 - Metro Cash & Carry
 - Sami Pharma
 - Mehfil-e-Khurasan
Aza Khana-e-Zahra
 - Karachi Grammar School
 - KIA Lucky Motor
 - Avari Tower
 - Unilever Head Office
 - Pakistan Cables
 - Anum Fabrics
 - Digital Apparel
 - Artistic Fabric
and Garments
 - Dollar Ink
 - Naval Dockyard
 - Maleeha Bhimji
 - Sindhtex Nooriabad
 - Duke Textile
 - ZK Industries Site Area
 - ZVMG Rangoonwala
Community Center
- Services Work, Core Cutting,
Grouting, Epoxy Work, Ferro-Scanning
 - Complete Construction
 - Jacketing & Retrofitting
 - Structural Investigation & As-Built Drawings

BUNGALOW

PREVIOUS PROJECTS

Renovation

- House of Habib
- Dossa Limited
- Mr. Ali Habib
- Ms. Zainab Residence Muhammad Ali Society
- Yaseen Saya Residence
- Marzia House

Complete Construction

- Faraz Khan (Bungalow)
- Khusro Ansari (Bungalow)
- Faiza Sami Fashion Designer
- Farhan Adamjee
- Mr Amin House Garden
- Mehfil-e-Khurasan



AREA OF ACTIVITIES

CONSTRUCTION WORK

RENOVATION

RETROFITTING WORK

- Steel Jacketing • Concrete Jacketing • FRP Jacketing

NON DESTRUCTIVE TESTING

- Ferro Scanning • Schmidt Hammer Test
- CAPO Test • Ultrasonic Testing

DEMOLISHING & SERVICES

- Stitch Coring • Concrete Breaking
- Fire Stopping according to UL • Wire Saw Cutting • Anchoring/Dowelling according to ETA

EXISTING STRUCTURAL INVESTIGATION & AS BUILT DRAWINGS

EXISTING STRUCTURAL ANALYSIS WITH DETAIL REPORT



- Resides at mountain tip of Muhammad Ali Society, Karachi.
- Due to movement of mountain it is common to have marble damage, landscaping and repairing work.
- Since early 90s, renovation work is going on by our hands not just architecturally but structurally.
- We, RBC, is continuously maintaining the flooring, walls, underground and overhand tanks, boundary walls.
- Fibrelinning technique is used by RBC for repair of existing Water Tanks.
- One of the renowned name in Pakistan in many endeavors, House of Habib is a satisfied client of RBC.





Lucky Motors

- Worked as sub-contractor for specialized retrofitting activity in Two Paint Shop Pits, 100m and 65m long.
- Alignment of Pit Walls was not as per client and specialized paint equipment requirement.
- Length of pit 100m and 65m required a specific internal distance between walls. Main contractor mistakenly constructed internal distance less than as required, which has become hindrance for machine fixing.
- We, utilizing our experience and retrofitting techniques, aligned the RCC walls and installed flushed SS plates with countersunk mechanical anchors.
- In length of 100m and 65m, dead straight walls, with 5500mm internal distance, flushed SS plates were retrofit with precision of 2mm.
- Another requirement in the Pit was regarding inclination slope of RCC Pit Floor for proper flow of residual paint in Pit Side by Channel.
- We, utilizing our precise technique and experience retrofit the Floor as per required slope in 100m and 65m length of Floor.



- Specialized Seismic Retrofitting of Existing Structure
- Initially around 20,000 to 30,000 holes were required in existing structure for Jacketing work, this cannot be done using Hit and Trial method.
- We suggested, Mushtaq and Bilal, for ferro scanning and preparation of as-built drawings with precise location of drill and anchor placement.
- Based on our as-built drawings of anchor placement, contractor prepared shop drawings of MS plates.
- Jacketing MS plates then installed using chemical anchors with high precision and without damaging existing structure internal reinforcement.
- In total, approx. 30,000-40,000 chemical rebars and anchors drilling was done and installed.





Sharmin Obaid Chinoy Bungalow

- Specialized retrofitting of masonry wall.
- Local contractor had transferred the load to wall of buildings that induced cracks in building structure as well thus proving the solution was not efficiently implemented by contractor.
- RBC provided better solution with the aim of precise execution of work by transferring load directly to RCC Structure rather blocks.
- As-built drawings of all accessories, AC outers, geyser, door, windows, their projections and sewage pipe ducting were drawn.
- Installation of ten Columns of W-Section 6"x6" and 8"X8" along with beams of W-Section 6"x6" and 4"x4".
- High strength epoxy anchors on columns and flat bars were installed in skilled manner and keeping the aesthetics.
- Eighty nine MS Plates of 3"x1/4" were installed by means of five anchors on each Plate in single line along 100 feet length.
- Welding was done professionally and keeping all existing electrical and instrumentation wiring safe during work.



CONSTRUCTION WORK



Khusro Ansar Bunglow



Cambridge A5



Khusro Ansari Bunglow



Cambridge A5



Karwon Textile



UT Industries



Cambridge A5

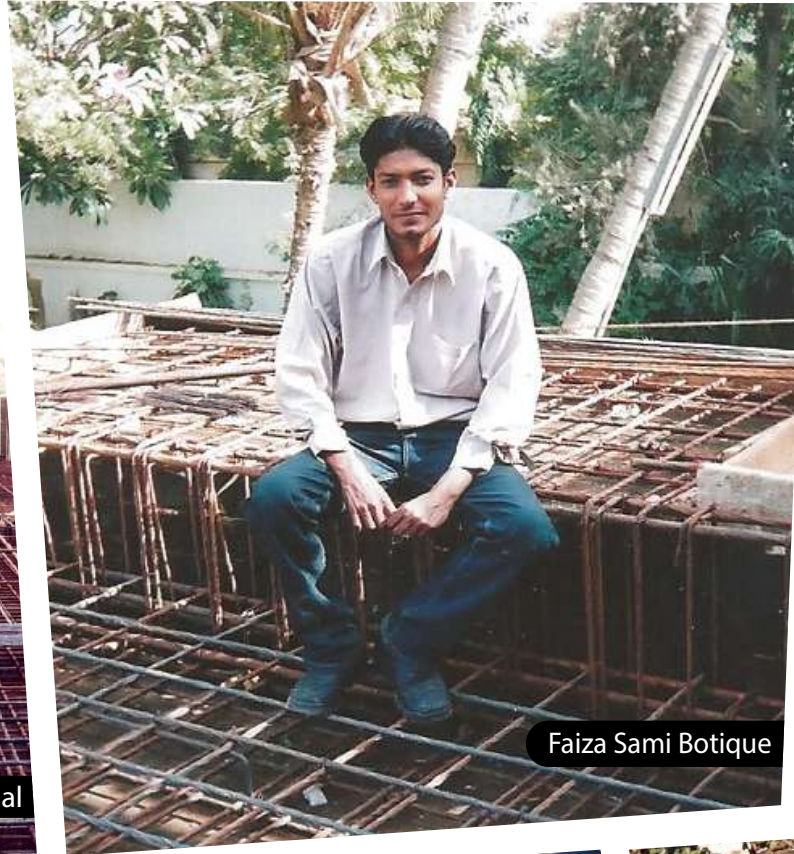


HSM Packages

CONSTRUCTION WORK



House of Habib



Faiza Sami Botique



House of Habib



Sami Pharma



Faiza Sami Residential



Cambridge A5



Mehfil-e-Khurasan

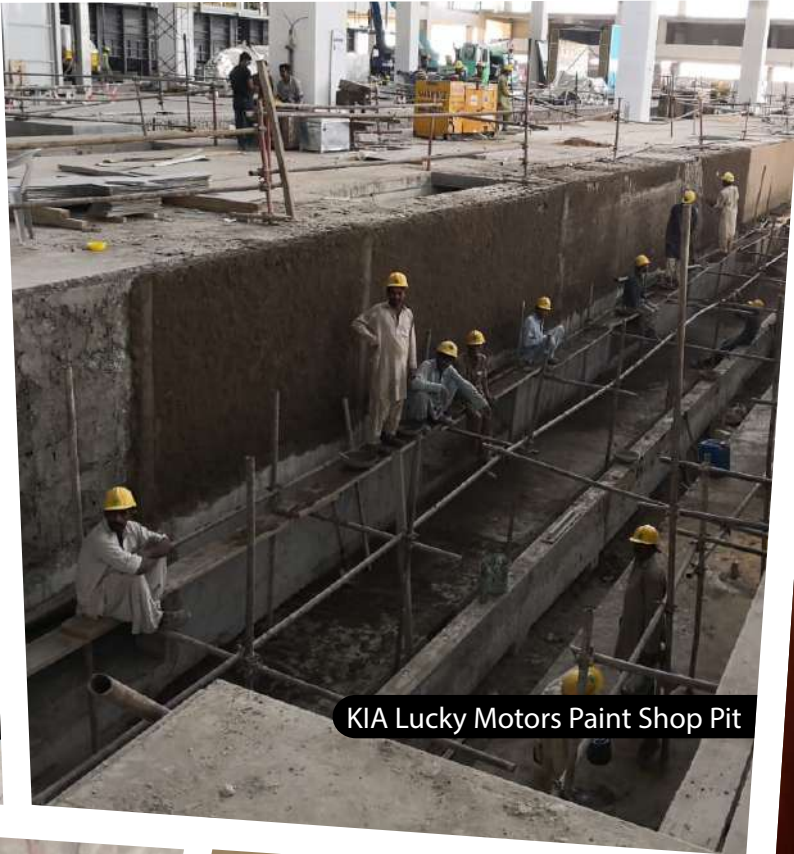


Mehfil-e-Khurasan

RETROFITTING WORK



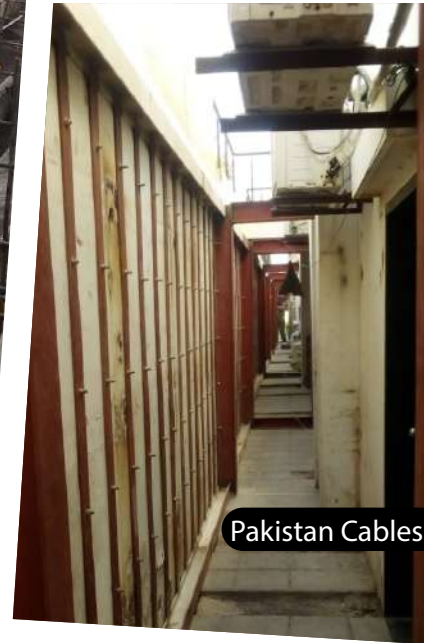
Sami Pharma



KIA Lucky Motors Paint Shop Pit



Karachi Grammer School



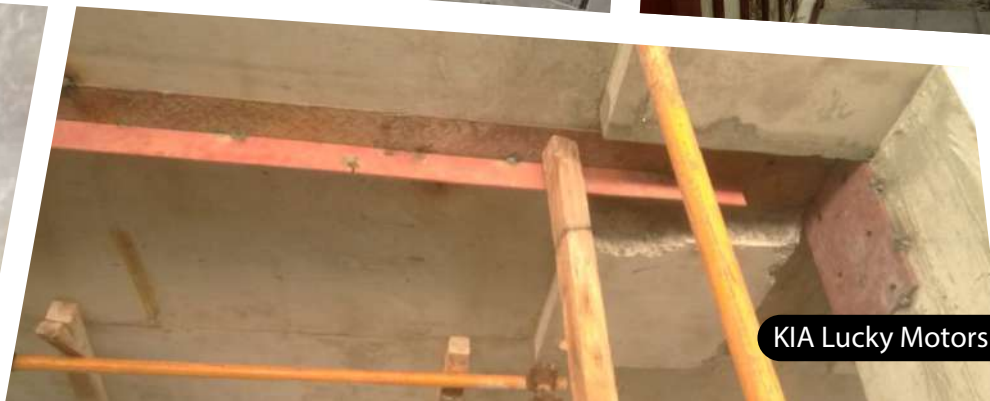
Pakistan Cables



Sami Pharma



Karachi Grammer School



KIA Lucky Motors



Pakistan Cable

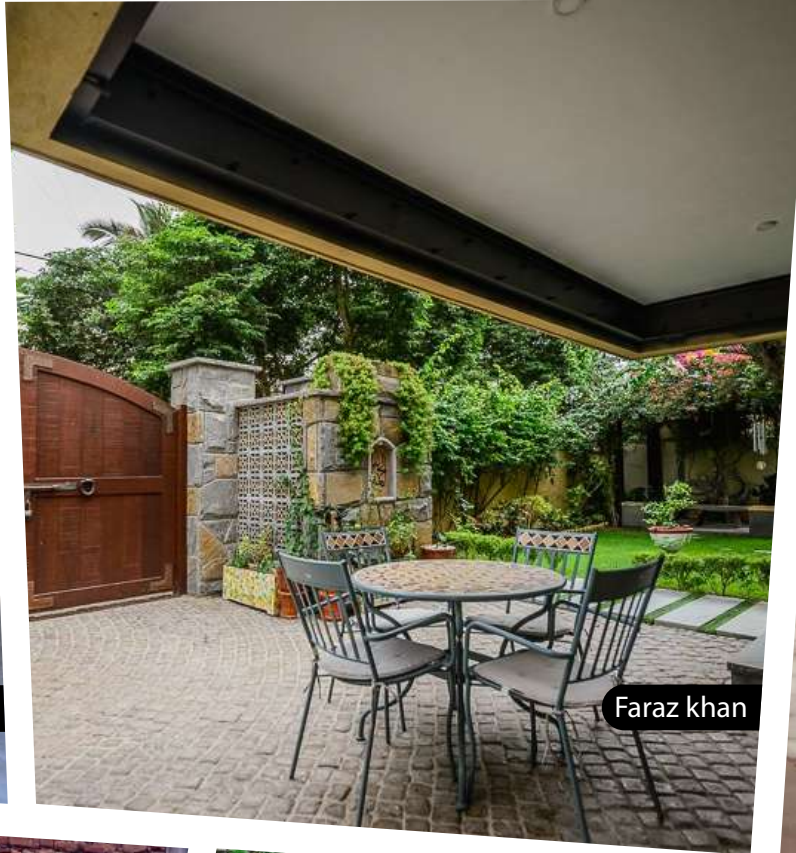
RETROFITTING WORK



RENOVATION WORK



Faraz Khan



Faraz Khan



House of Habib



House of Habib



Mehfil-e-Khurasan



STN, Landscaping Works



House of Habib, Fountain



Brit Rail Office

STRUCTURAL TESTING



Schmidt Hammer Testing



Scanning



ASF Tower



Sami Pharma



ASF Towers



Arsika



Compressive Core Cutting



Scanning

DEMOLISHING & SERVICES



Sami Pharma



Sami Pharma



Newstar Dying



Arsika



Rajby Industries



Arsika



Arsika



KIA Lucky Motors

DEMOLISHING & SERVICES



PIBT



Habib Sugar Mill



Fire Stop



Karachi Grammer School



Mekotex (pvt) Ltd



Stitched Core



Stitched Core



Stitched Core

STRUCTURAL INVESTIGATION & AS-BUILT



Sindh Text Nooriabad



Sindh Text Nooriabad



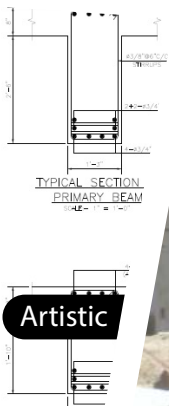
Naval Dockyard



Anum Fabric



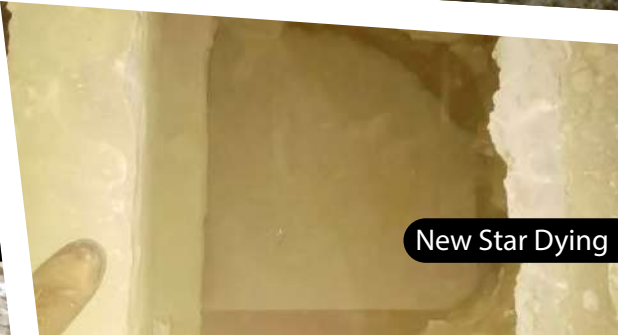
Digital Apparel



Artistic



Sindh Text Nooriabad



New Star Dying

EQUIPMENT

S. NO	ITEMS	QUANTITY
01	Concrete Mixer Machine	3 nos.
02	Steel Forms	25000sft
03	Folding Pipes	20000sft
04	Wooden Forms	12000sft
05	Wooden Props	2500 nos.
06	Bamboo	1500 rft
07	Compactor Handy	2 nos.
08	Vibrator with Shaft	4 nos.
09	Pumps 2"	4 nos.
10	Pumps 3"	2 nos.
11	Leveling Machine	1 nos.
12	Wheel Borrows	24 nos.
13	Combo Hammer Drill	25 nos.
14	Diamond Core Machines	10 nos.
15	Electric Breakers	15 nos.
16	Pneumatic Breakers	10 nos.
17	Air Compressor 390 cfm	2 nos.
18	Hoppers	4 nos.
19	Rebar Scanner	1 nos.
20	Schmidt Hammer	1 nos.
21	Mechanical Floor Floater	1 nos.
22	Angle Grinder 5"	10 nos.
23	Angle Grinder 9"	12 nos.
24	Table Grinder	2 nos.
25	Steel Stand Drill Machine	4 nos.
26	Magnetic Drill Machine	1 nos.
27	Welding Plant-Dry	2 nos.
28	Welding Plant-Wet	2 nos.
29	Diesel Engine Welding Plant	1 nos.
30	Compressor For Crack Injection	2 nos.
31	Generator Petrol 5 kva	2 nos.
32	Airless Pumps	4 nos.
33	Grout Mixing Machine	2 nos.
34	Shotcrete Machine	2 nos.
35	Grout Pump	1 nos.
36	Injection Tools	24 nos.



Serial No. 496709
PEC-11



Scan QR code to view details

Initial Date of Registration in PEC: Mar 16, 2021

PAKISTAN ENGINEERING COUNCIL

Licence No: 14869 Category: C4/E Validity: 30 June, 2021
LICENCE OF PAKISTANI CONSTRUCTOR/OPERATOR

(Under the bye-laws of Pakistan Engineering Council 1987)
The firm will bid individually and not in competition with "M/S REBUILD CONSTRUCTION COMPANY (C672679)" for the same project.

This is to certify that M/s REBUILD CONSTRUCTION (PRIVATE) LIMITED (Licencee), with its registered office at D-46, 1ST FLOOR, MUHAMMAD ALI SOCIETY, MEERAN MUHAMMAD SHAH ROAD, KARACHI have been licensed under Construction and Operation of Engineering Works Bye-laws 1987, until the validity date to construct/operate engineering works, the construction/capital cost of which does not exceed Rs. 200 (TWO HUNDRED) million provided the licencee fulfils all the qualification requirements prescribed by Client or Employer for a particular engineering work; and subject to the licencee continuing to fulfill all the requirements of the bye-laws.

Field of Specialization BC01 - BC02 - CE01 - CE04 (Irrigation & Flood Control Systems) - CE04 (Water Retaining Structures) - CE08 - CE09 - CE10 - CE11 (General engineering Works only) - (NINE ONLY) (Specialization Code Nos. for detail see overleaf)

Date of Issue: Mar 16, 2021
(Karachi)



[Signature]
Registrar
Pakistan Engineering Council,
Islamabad.

- Notes:**
1. The firm does not get renewal of its license within a year after expiry of its license, the firm may be renewed after payment of outstanding fee if entire defaulting period plus surcharge at the rate of 1% per month of defaulting fee amount, or as prescribed from time to time.
 2. The Employer may terminate employment of engineers whose names are mentioned on backside of approved project accordingly. The Engineer Incharge in case the consultant is not approved shall be held responsible, if any information, document or paper submitted by the firm is found incorrect or forged.
 3. The firm shall be held responsible for the number of engineers employed by the Constructor/Operator and the information is found incorrect or forged.

- BC01 Prefabricated Buildings and Steel Framed Buildings and Industrial Plants
- BC02 Restoration and Conservation
- CE01 Road and pavements Drainage and retaining system Signcraft Installation
- CE04 Dams/Water Retaining Structures Irrigation & Flood Control System
- CE08 Oil and Gas Pipe Lines
- CE09 Sewerages Works Water Supply
- CE10 General Civil Engineering Works Concrete Repair Soil Investigation & Stabilization Landscaping & Horticulture Reclamation Works General Maintenance Water Proofing
- CE11 General Civil Works



+92 21 34380470-1 ☎

D-46, Level 1, Adjacent Miran Mohammed Shah Road, Muhammad Ali Society, Karachi, Pakistan 📍

info@rbc.com.pk ✉

www.rbc.com.pk 🖱